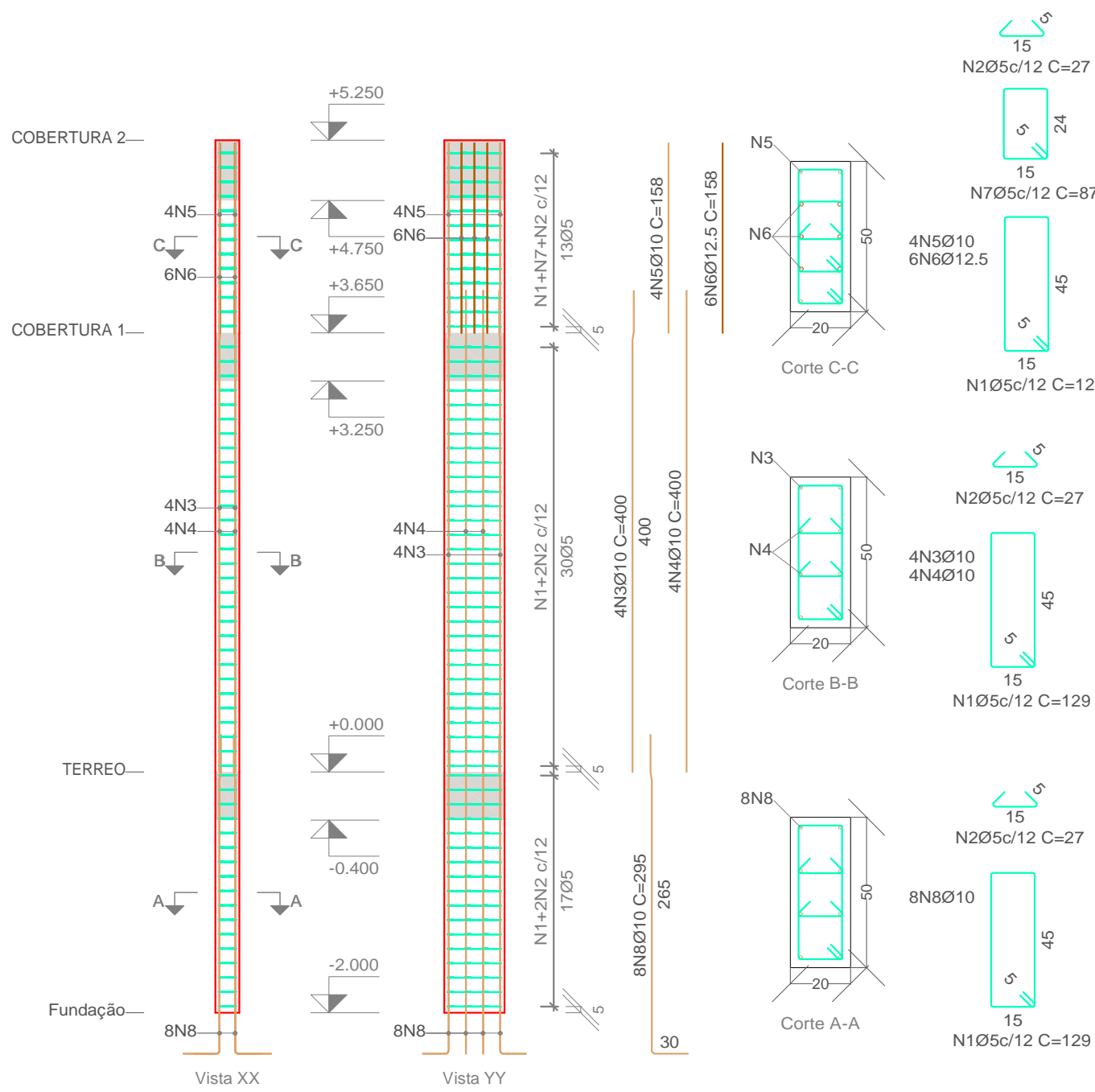
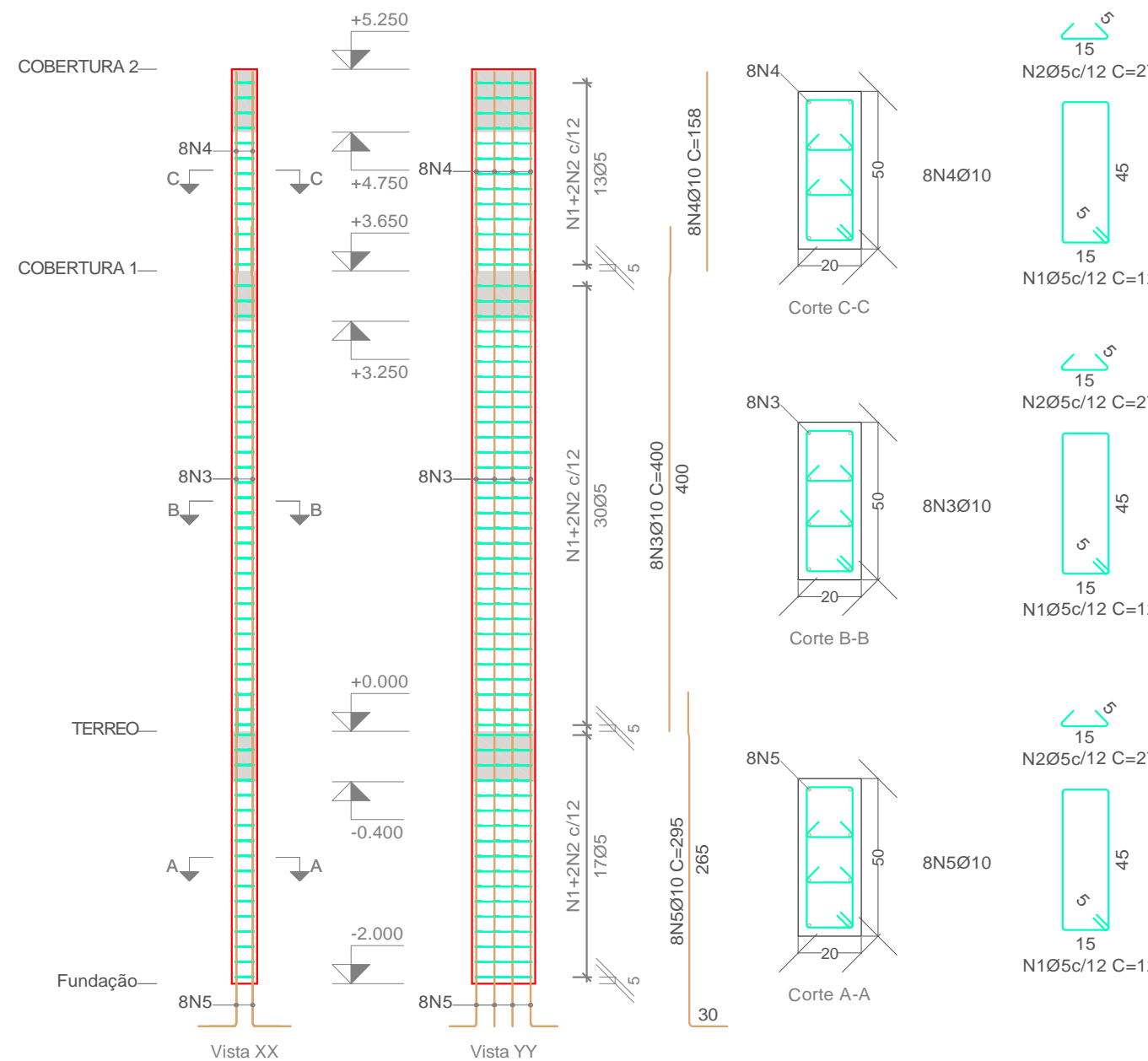


PILARES

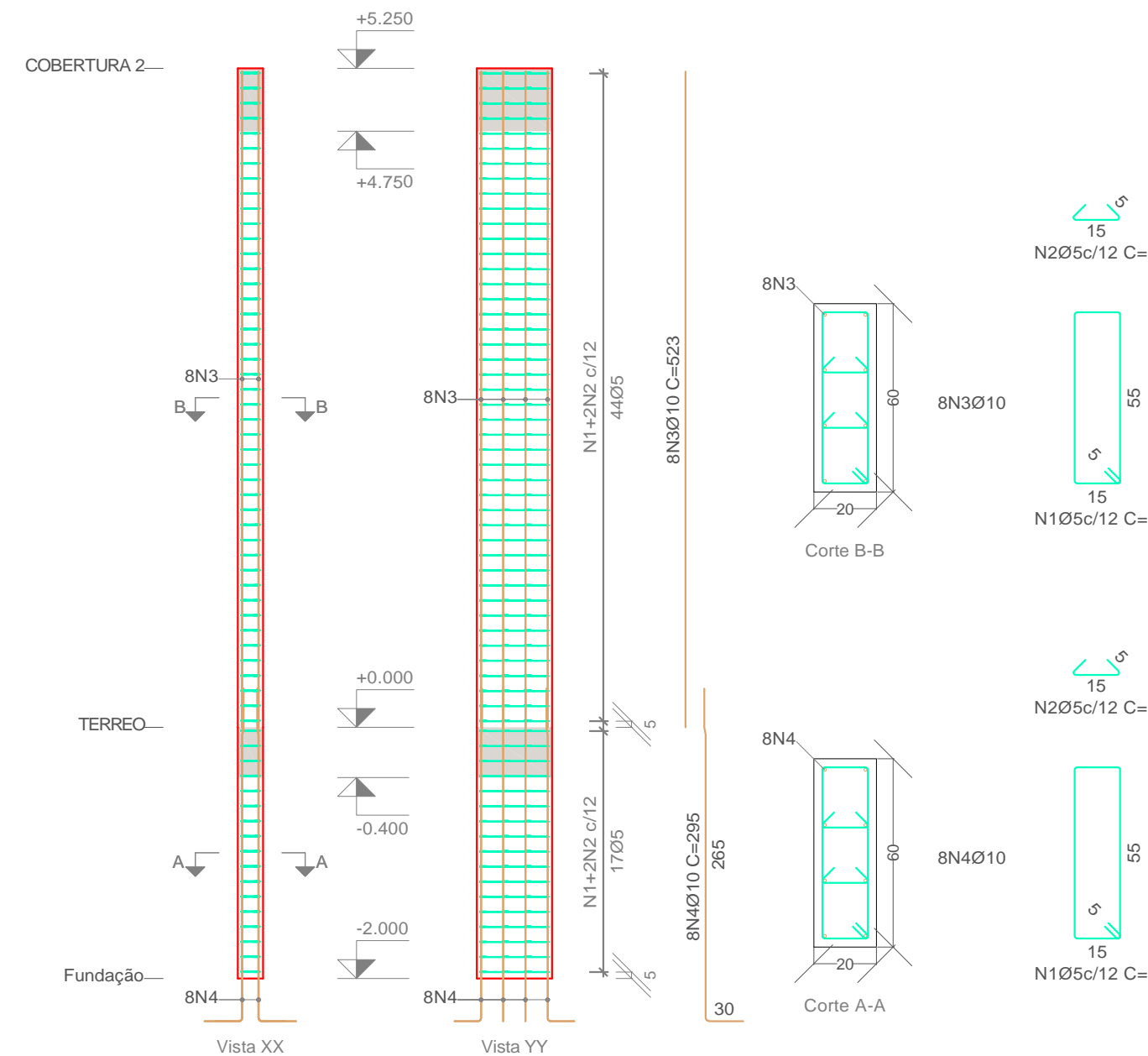
P 40
Esc. 1:50



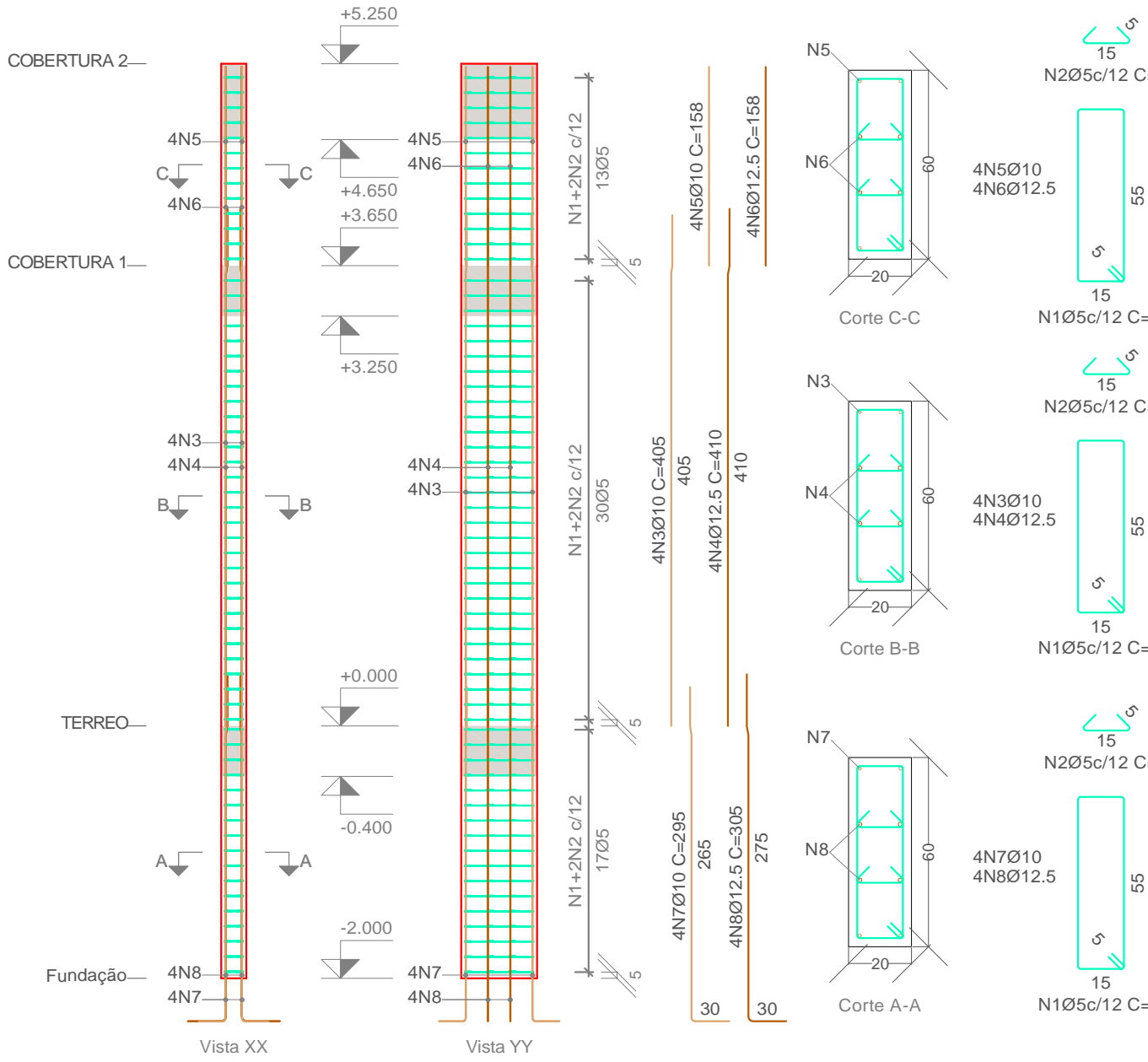
P 46
Esc. 1:50



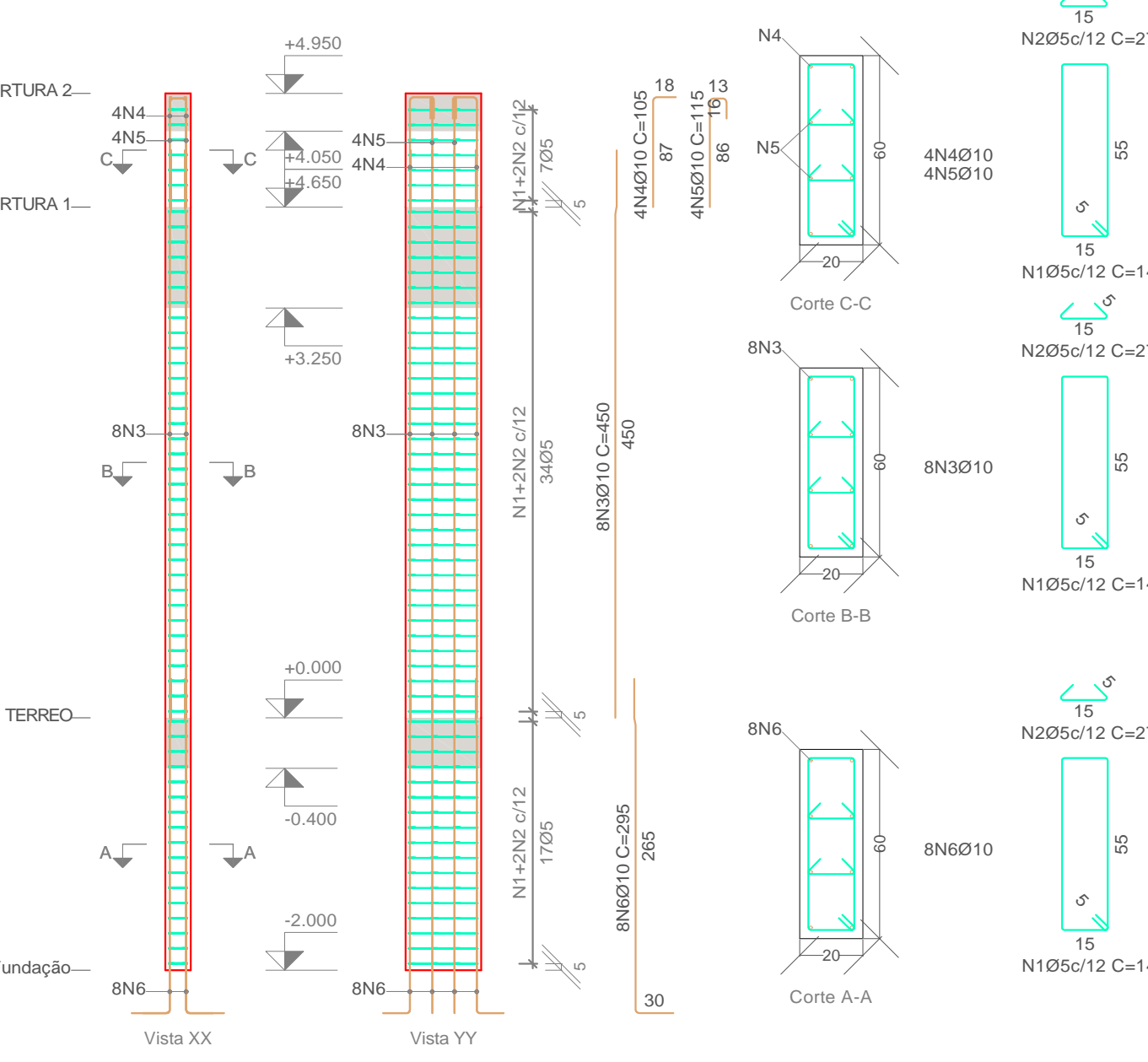
P 53
Esc. 1:50



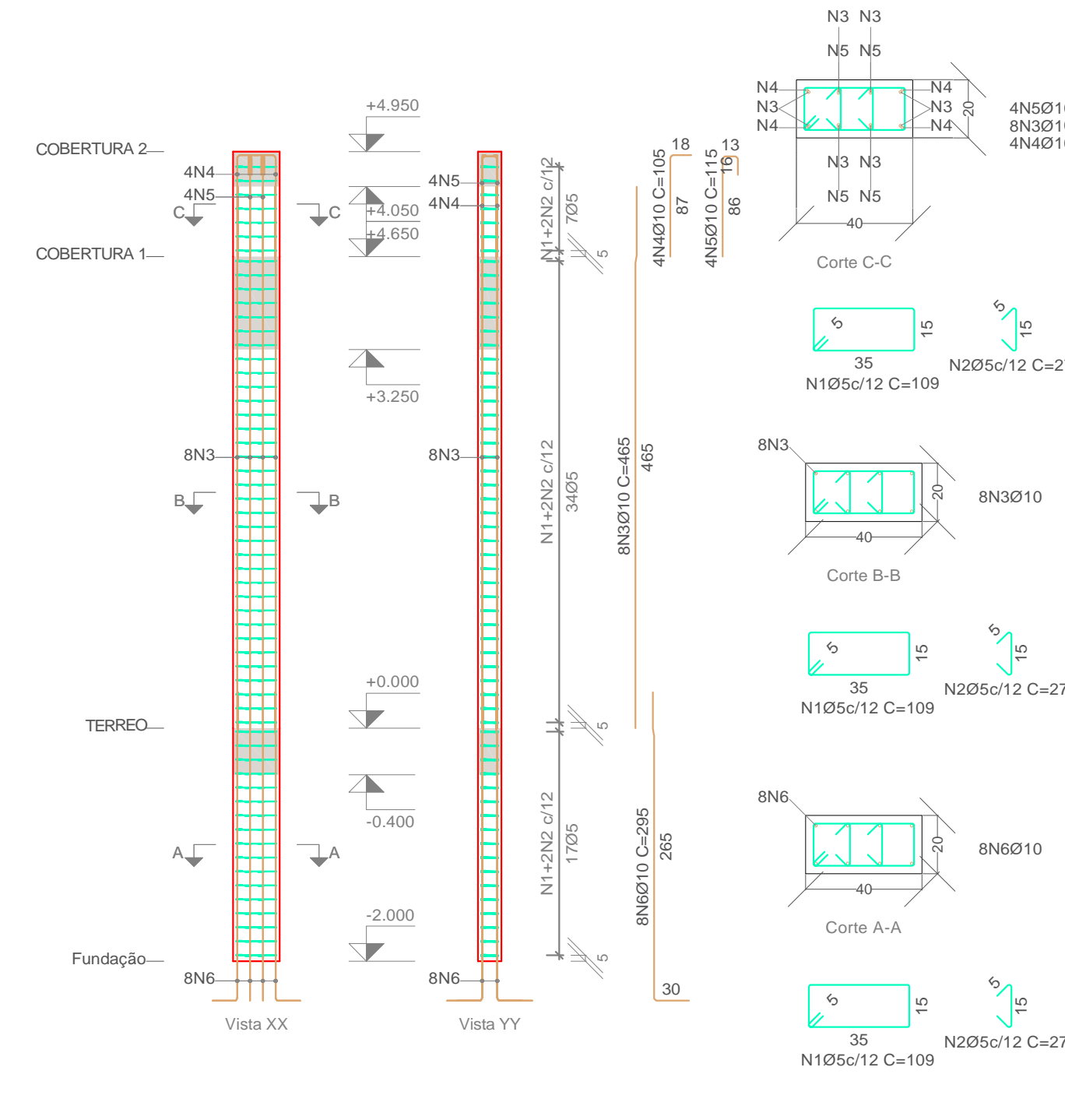
P 1
Esc. 1:50



P 54-P56
Esc. 1:50



P 55
Esc. 1:50



Elemento	Pos.	Diam.	Q.	Dob. (cm)	Reta (cm)	Dob. (cm)	Comp. (cm)	Total (cm)	CA-50 (kg)	CA-60 (kg)
P30	1 Ø5	60					109	6540		
	2 Ø5	103					27	2781		
	3 Ø10	14					430	6020	37.1	10.3
	4 Ø10	10					145	1450	8.9	
	5 Ø10	4					155	620	3.8	
	6 Ø10	4					295	1180	7.3	
	7 Ø10	2					295	590	3.6	
Total+10%:									66.8	16.2
P31	1 Ø5	60					149	8940		14.0
	2 Ø5	120					27	3240		5.1
	3 Ø10	4					405	1620	10.0	
	4 Ø12.5	4					410	1640	15.8	
	5 Ø10	4					158	632	3.9	
	6 Ø12.5	4					158	632	6.1	
	7 Ø10	4					295	1180	7.3	
Total+10%:									60.4	21.0
P32	1 Ø5	44					109	4796		7.5
	2 Ø5	44					27	1188		1.9
	3 Ø10	6					600	3600	22.2	
Total+10%:									24.4	10.3
P40	1 Ø5	60					129	7740		12.2
	2 Ø5	107					27	2889		4.5
	3 Ø10	4					400	1600	9.9	
	4 Ø10	4					400	1600	9.9	
	5 Ø10	4					158	632	3.9	
	6 Ø12.5	6					158	948	9.1	
	7 Ø5	13					87	1131		1.8
Total+10%:									52.0	20.4
P46	1 Ø5	60					129	7740		12.2
	2 Ø5	120					27	3240		5.1
	3 Ø10	8					400	3200	19.7	
	4 Ø10	8					158	1264	7.8	
	5 Ø10	8					295	2360	14.5	
Total+10%:									46.2	19.0
Elemento	Pos.	Diam.	Q.	Dob. (cm)	Reta (cm)	Dob. (cm)	Comp. (cm)	Total (cm)	CA-50 (kg)	CA-60 (kg)
P53	1 Ø5	61					149	9089		14.3
	2 Ø5	122					27	3294		5.2
	3 Ø10	8					523	4184	25.8	
	4 Ø10	8					295	2360	14.5	
Total+10%:									44.3	21.5
P54=P56	1 Ø5	58					149	8642		13.6
	2 Ø5	116					27	3132		4.9
	3 Ø10	8					450	3600	22.2	
	4 Ø10	4					105	420	2.6	
	5 Ø10	4					115	460	2.8	
	6 Ø10	8					295	2360	14.5	
Total+10%:									46.3	20.4
(x2):									92.6	40.8
P55	1 Ø5	58					109	6322		9.9
	2 Ø5	116					27	3132		4.9
	3 Ø10	8					465	3720	22.9	
	4 Ø10	4					105	420	2.6	
	5 Ø10	4					115	460	2.8	
	6 Ø10	8					295	2360	14.5	
Total+10%:									47.1	16.3
P52	1 Ø5	60					149	8940		14.0
	2 Ø5	120					27	3240		5.1
	3 Ø10	4					405	1620	10.0	
	4 Ø12.5	4					410	1640	15.8	
	5 Ø10	4					158	632	3.9	
	6 Ø12.5	4					158	632	6.1	
	7 Ø10	4					295	1180	7.3	
Total+10%:									60.4	21.0
									Ø5: 0.0	99.6
									Ø10: 207.3	0.0
									Ø12.5: 37.1	0.0
									Total: 244.4	99.6

COBRIMENTOS MÍNIMOS

LAJE E ESCADA: 2,5cm
PILAR: 2,5cm
PILAR (CONTATO COM O SOLO): 2,5cm

SAPATA: 4cm
VIGA: 2,5cm

CONCRETO

fck = 30 MPa

AÇO: CA-50 E CA-60



PREFEITURA MUNICIPAL
SANTO ANTÔNIO DE LEVERGER

PILAR

P 40 P 46 P 53 P 1 P 54-P56 P 55

21

RESP. TÉCNICO

PROPRIETÁRIO

Maycon Henrique Moraes Rodrigues
CREA - MT: 51648

Prefeitura Municipal de Santo Antônio de Leverger
CNPJ: 03.507.555/0001-12